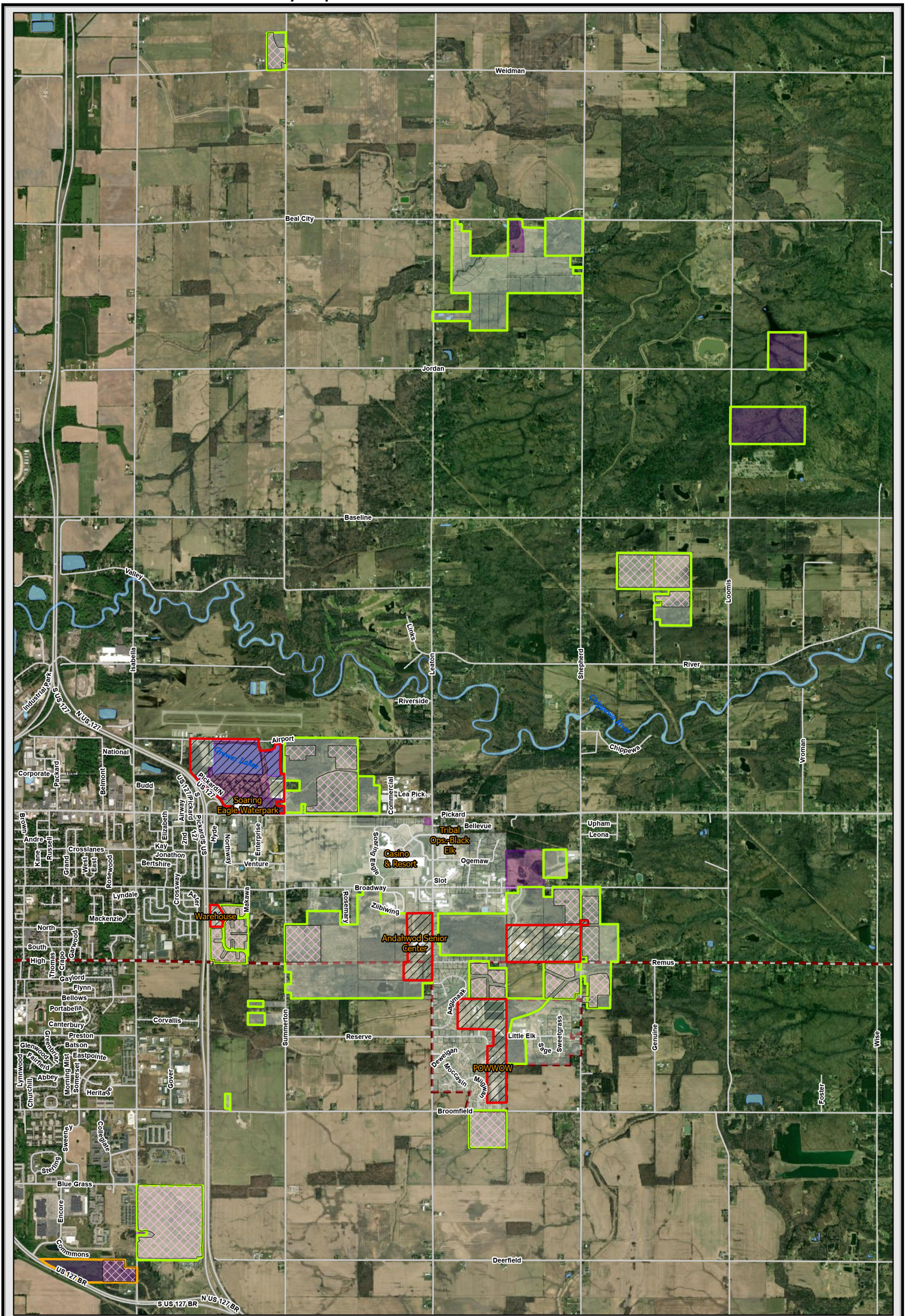


# EXHIBIT B – Isabella County Open Lands Bow Season



Land In Trust Zone	No Hunting
Non Trust	Bow
Reservation	Farm Leased
MI Permit	


(\*Permission required until harvest)

## Deer Season 2024 (Sept 4th- Oct 31st)

### SCIT Members Hunting Areas

**N**

The Saginaw Chippewa Indian Tribe makes no warranty expressed or implied, regarding the accuracy, completeness or usefulness of the information presented. Users of this information assume all liability of its fitness for a particular use.



Source: SCIT\_Data 2024